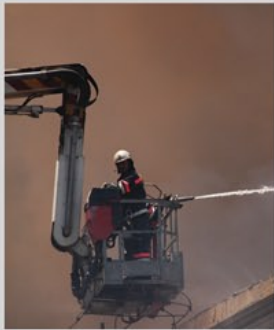




# D180 Data Sheet

14 Proportional Function  
Expansion Module

**COOPER** Bussmann



# D180 Expansion Module



## System Overview

The OMNEX D180 expansion module is a robust logic controller & valve driver designed for smooth operation & precise control of industrial machinery in global applications. Paired with the R160 or R2160 receiver, the module adds 14 proportional I/O combinations (I/O can also be configured to operate digital functions). The D180 is designed to be powered by a 12VDC or a 24VDC system & is fully customizable to operate momentary, latched, toggled & inter-locked functions. Depending on the application, the D180 can provide digital & analog (current, voltage or PWM output) signals. When combined with the R160 or R2160, this pair will provide up to 19 digital & 14 proportional functions (or 17 digital & 16 proportional).

## Applications

- Concrete Pump Trucks
- Load / Haul / Dump
- Off Road Machines
- Rotator Trucks
- Marine
- Tow Trucks
- Track Type Machines
- Truck Chasis
- Material Handling Equipment
- Many More Applications

## Features

- 14 Proportional I/O controls
- Factory configurable for custom applications
- Digital outputs (optional)
- Plug and play
- Rugged and weatherproof
- Diagnostic indicators
- Modules can be linked for additional I/O

## Specifications

Outputs	14 proportional functions
Indicators & Diagnostics	8 status LEDs
Power	9 - 32VDC
Operating Temp. Range	-40 °F to 158 °F (-40 °C to 70 °C)
Size	5.1" x 4.7" x 1.4" (130mm x 119mm x 36mm)
Weight	.65lbs (300g)
Construction	High impact plastic, weatherproof
Approvals / Certificates	

Specifications subject to change without notice - E&OE